



TRITEC

Company introduction

FACTS & FIGURES

FOUNDING OF TRITEC	1993
COUNTRIES	17
INSTALLATION PARTNERS	2'500
EMPLOYEES	250

SYSTEM-DISTRIBUTOR



TRITEC plans and supplies complete PV-Systems

SOLAR MODULES

AEG

 **CanadianSolar**

Jinko^{Solar}

 **LG**

INVERTERS

AEG

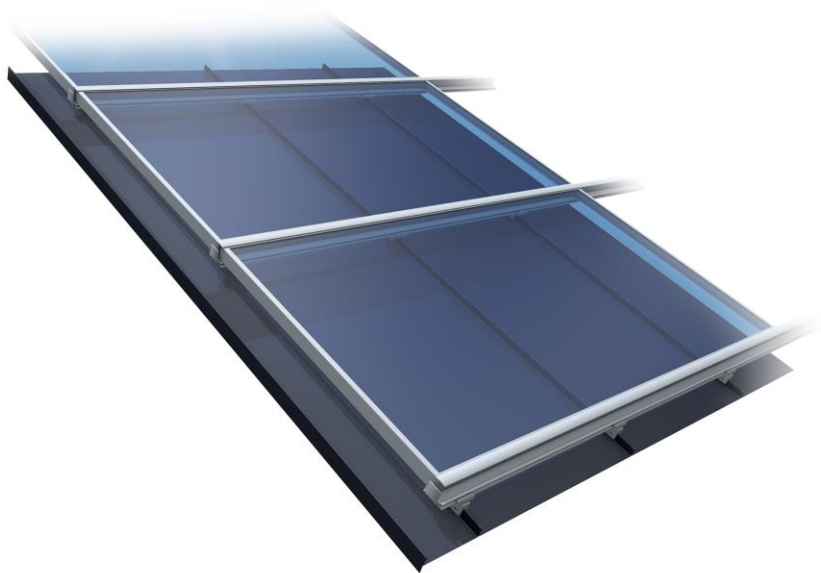


KOSTAL

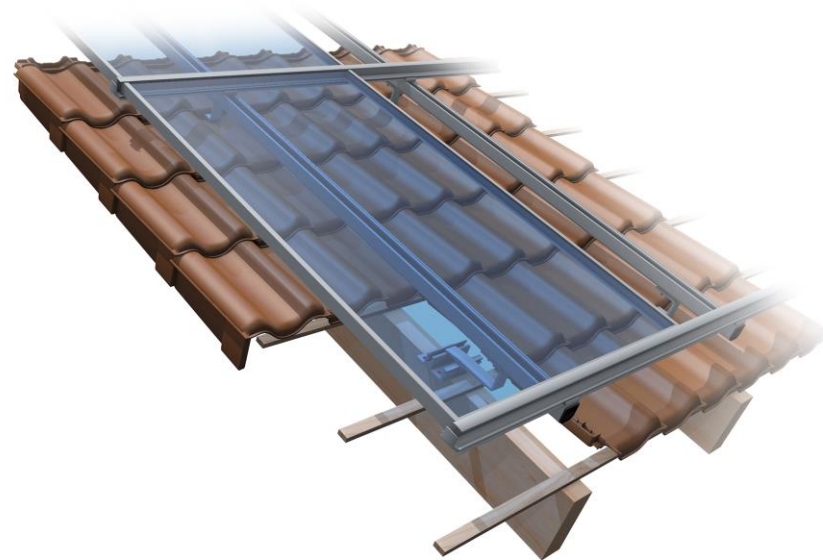


Mounting systems for any kind of roof

Double folded
standing seam roofs:

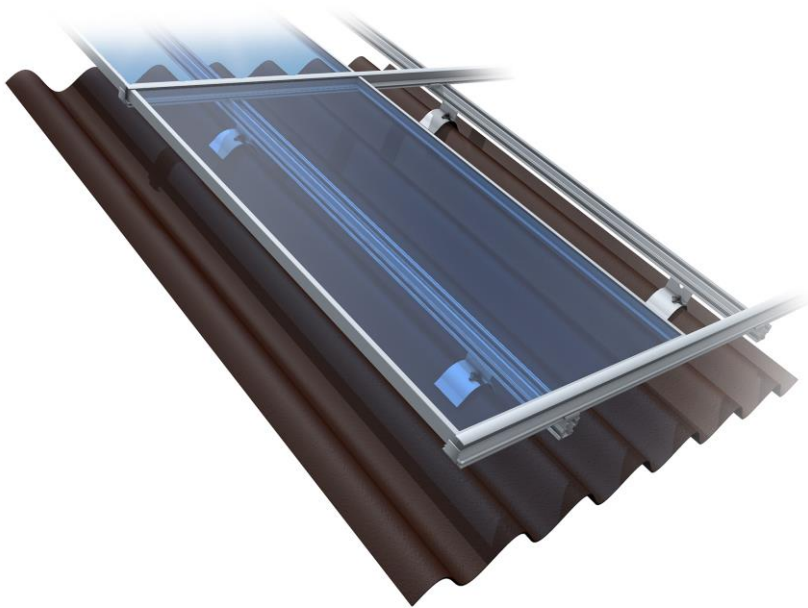


Standard tiled roofs:

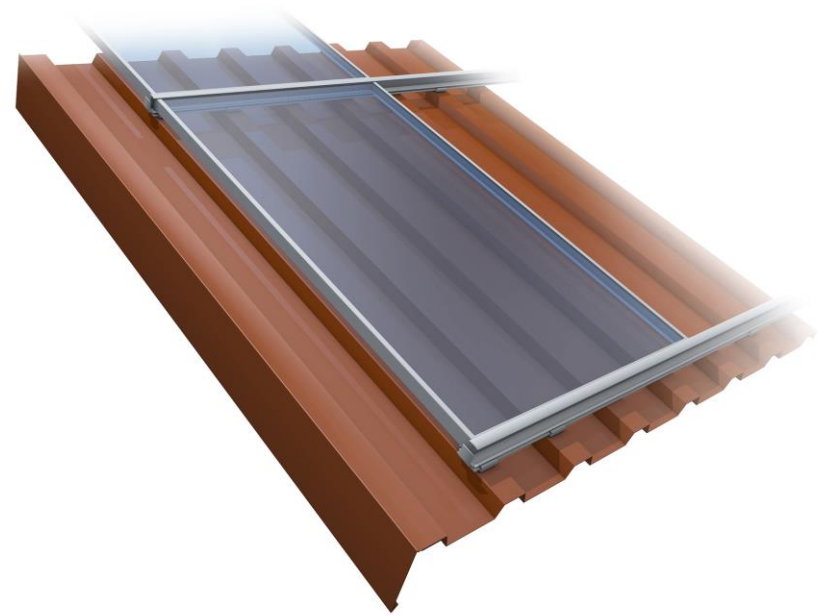


Mounting systems for any kind of roof

Corrugated roofs:



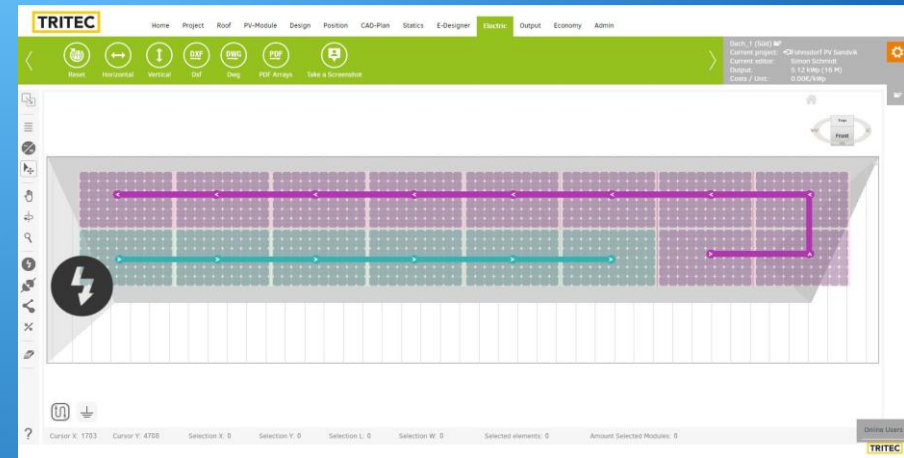
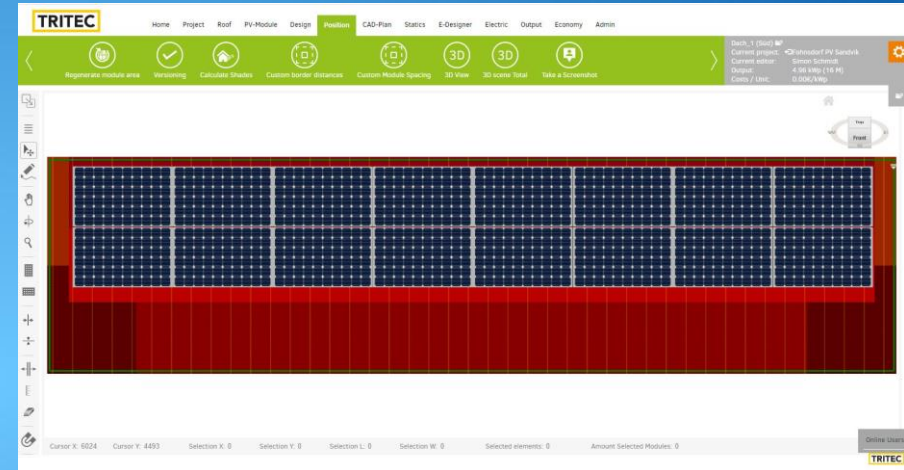
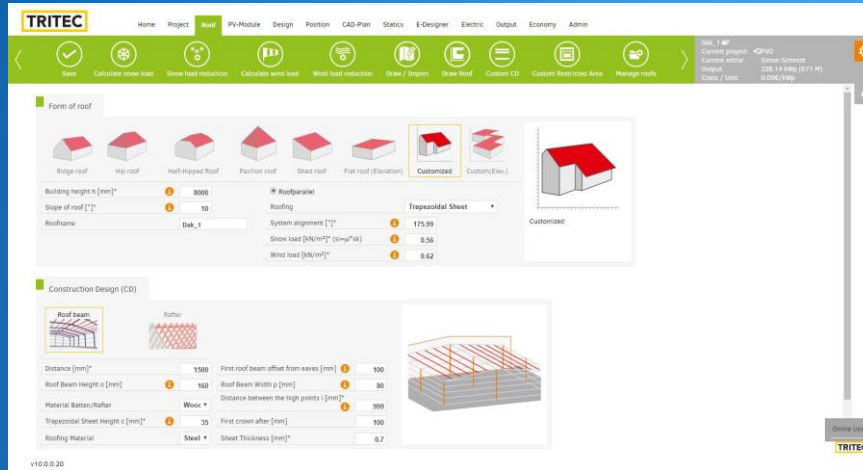
Trapeze sheet metal roofs:



ADVANTAGES OF INLAY

- **Easy and quick to install, saves money due to less mounting time**
- **Less frame / glass stresses during heat extension**
- **Proofed quality, also in high snow pressure areas**
- **High class looking PV-systems, also available in full black**
- **Professional dimensioning software, including inverter and string design**

PV-Software TRI-DESIGN



Some TRITEC references

Project Mutina Modena / Italy
950 kW – 4`222 PV-Modules on trapezoidal roof



MIGROS Distribution Centre, Neuendorf / Switzerland

5.21 MW – 20`039 PV-Modules on flat roof



Xmet AG – Lyss / Switzerland
150 kW – 576 PV-Modules on trapezoidal roof



Erp – Bolst PV, Netherland
4`480 SunPower modules combined with SolarEdge



Project Abruzzo Pineto / Italy
2.2 MW – 9`657 PV-Modules on ground mount



THANK YOU

Contact:

Simon Schmidt

+49 160 901 72 140

www.tritec-energy.com

Simon.schmidt@tritec-energy.com